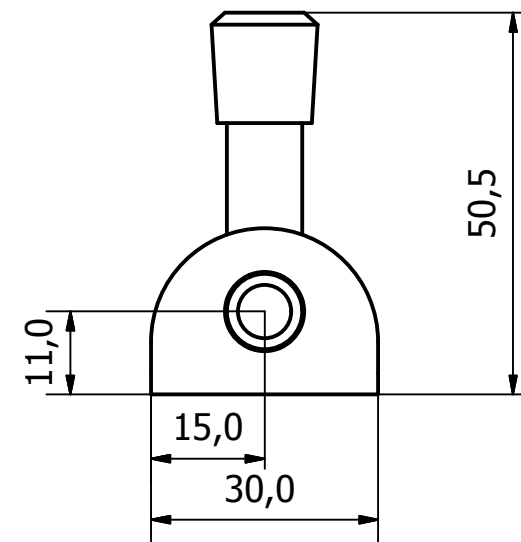
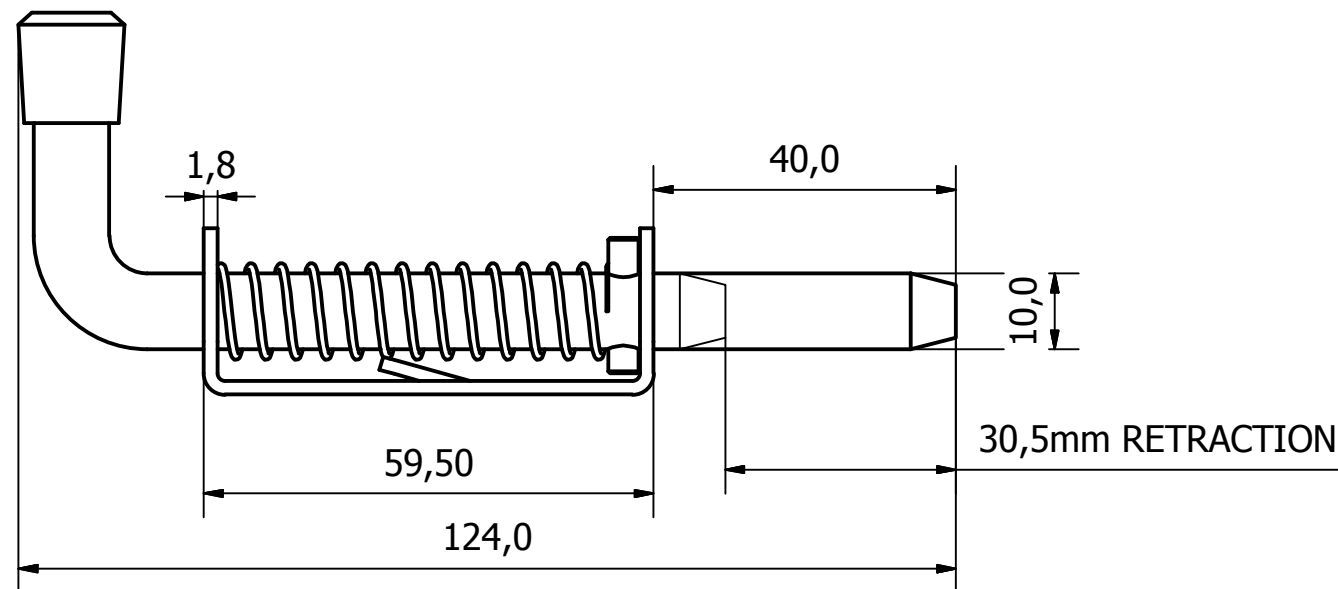
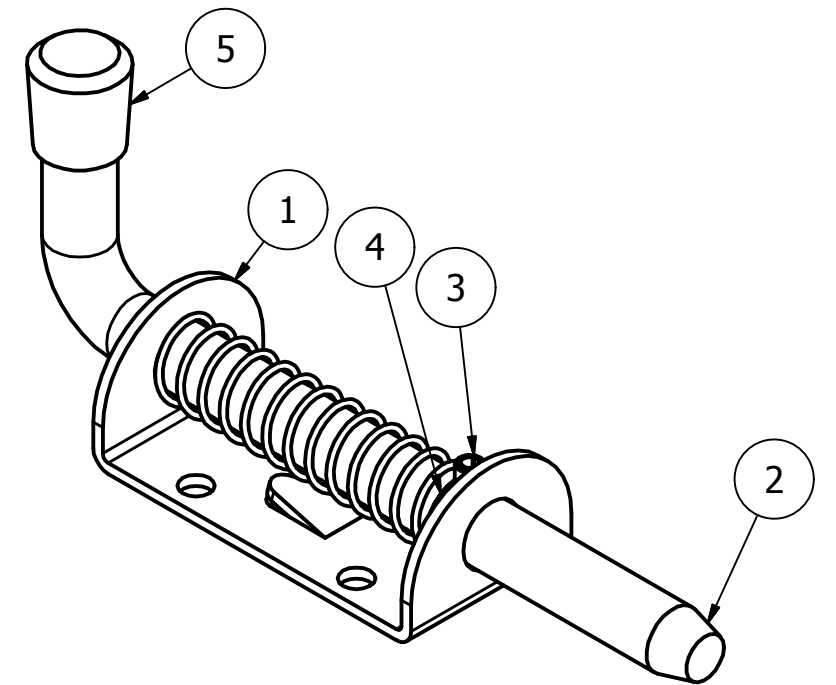


PARTS LIST			
ITEM	QTY	PART NUMBER	DESCRIPTION
1	1	0839-100-1	S/STEEL SPRING BOLT BASE PLATE
2	1	0839-100-2	S/STEEL 90 DEG BOLT - 122 O/A
3	1	0839-100-4	S/STEEL BOLT PIN - 17.9 O/A
4	1	0839-100-5	S/STEEL SPRING
5	1	0839-100-3	BLACK PLASTIC CAP



1	VALIDATION COMPLETE	15/02/17	A.P
REV	DESCRIPTION	DATE	APPROVED

GENERAL TOLERANCES ON LENGTHS
0.5 - 6 ± 0.1mm
6 - 30 ± 0.2mm
30 - 120 ± 0.3mm
120 - 400 ± 0.5mm
400 - 1000 ± 0.8mm
1000 - 1200 ± 1.2mm
2000 - 4000 ± 2.0mm

ALBERT JAGGER LTD
 GREEN LANE
 WALSALL PHONE: 01922 471000
 WEST MIDLANDS FAX: 01922 648021
 WS2 8HG

THIS DRAWING & THE DESIGN SHOWN ARE THE PROPERTY OF ALBERT JAGGER LTD AND MUST NOT BE USED OR COPIED BY A THIRD PARTY WITHOUT PERMISSION

DRAWN BY
U.F

CHECKED BY
A.P



SCALE
1 : 1

MATERIAL
-

MASS
0.130 kg

FINISH
NATURAL

Date
06/12/2016

ALL DIMS IN MM UNLESS STATED DO NOT SCALE

A3



10mm SPRING BOLT		Edition	Sheet
0839-100	1	1 / 1	