

A IF IN DOUBT ASK

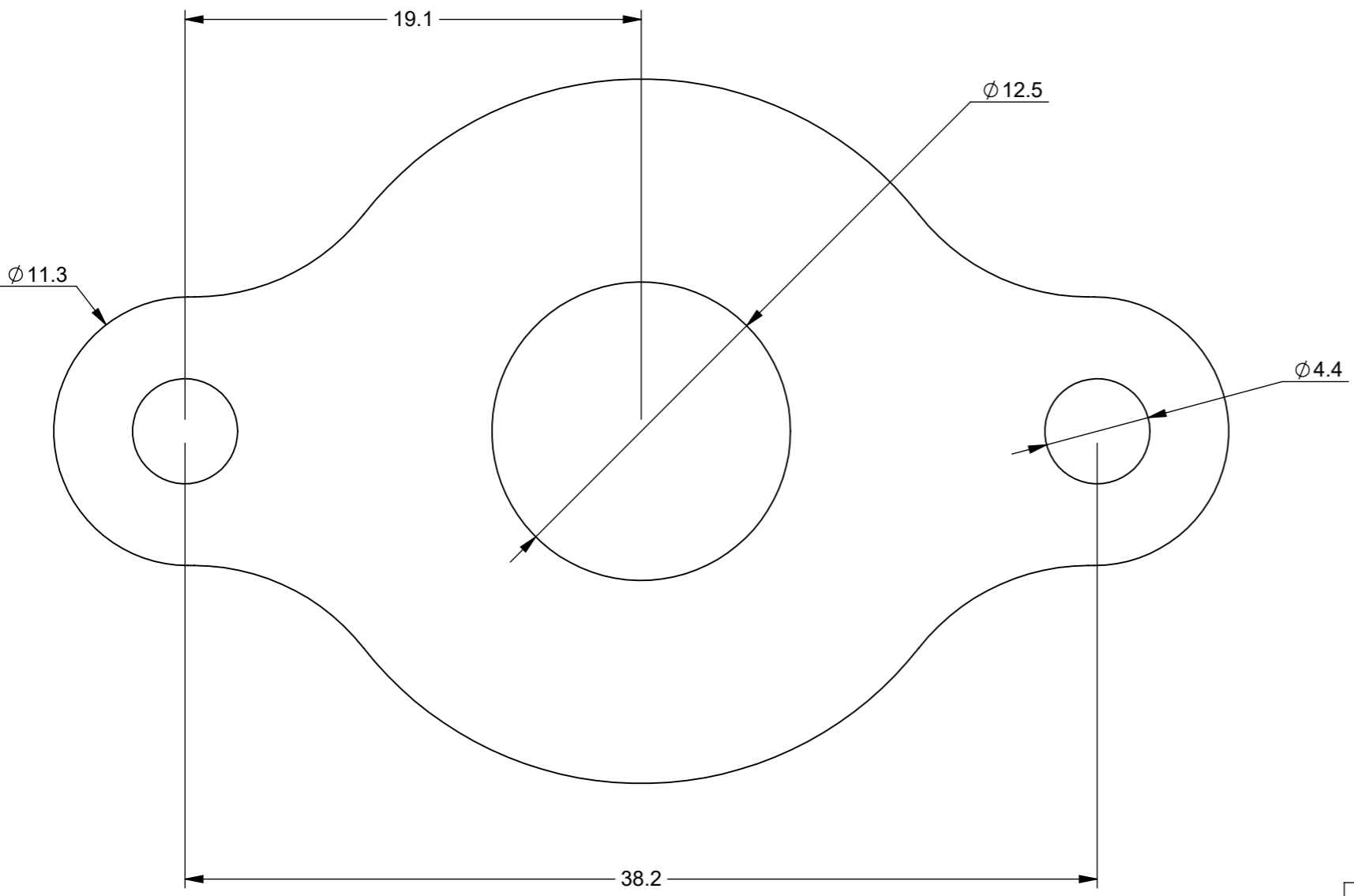
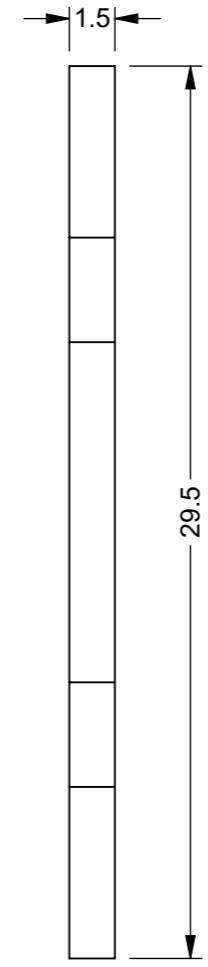
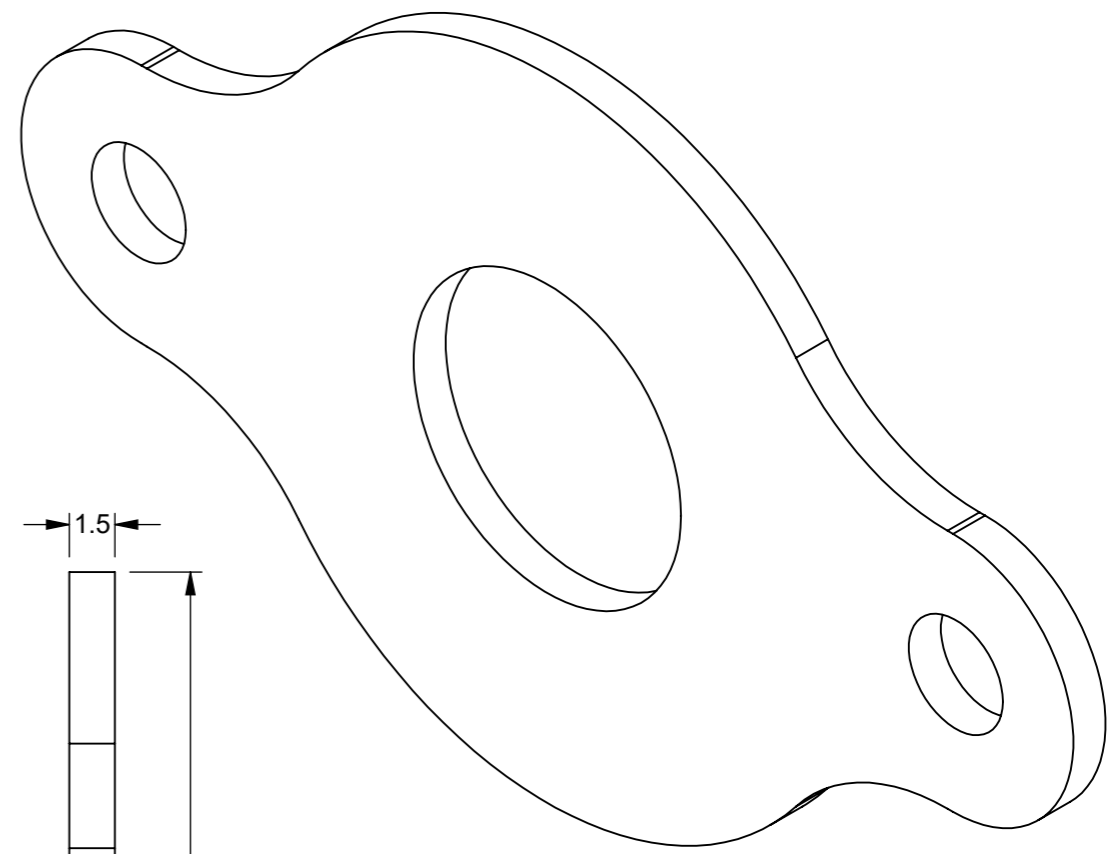
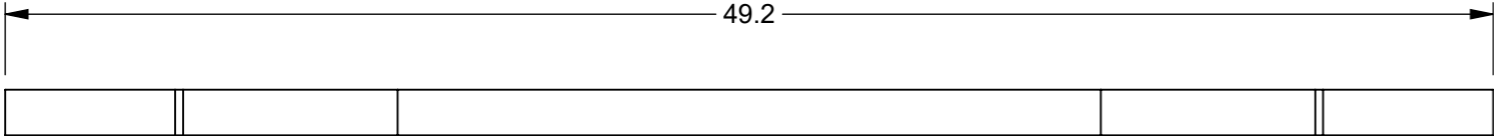
B

C

D

E

F



ZONE	REV.	DESCRIPTION	DATE	APPROVED
	1	VALIDATION COMPLETE	05/07/2023	AP
	A	RE-DRAWN FROM 2295-001 V2 - CHANGED BRASS CODE	05/07/2023	SR

UNLESS OTHERWISE STATED, ALL DIMENSIONS IN mm

TOLERANCES		SURFACE FINISH 1.6µm Ra	
0.5 - 6	= ±0.1mm	FILLET RADII	0.5 TO 1.0
6 - 30	= ±0.2 mm	SQUARENESS	0.05 IN 25
30 - 120	= ±0.3 mm	PARALLELISM	0.05 IN 25
120 - 400	= ±0.5 mm	RUNOUT	0.1
400 - 1000	= ±0.8 mm	ANGLES	±0.5°
1000 - 2000	= ±1.2 mm		
2000 - 4000	= ±2.0 mm		

MATERIAL: CZ108 BRASS	DRAWN BY: SR	DESCRIPTION: CHROME PLATED ESCUTCHEON BASE			A3
MASS: 0.009KG	CHECKED BY: AP	NUMBER: 2295-001	REVISION: 1	SHEET: 1 of 1	
FINISH: CHROME PLATED	APPROVED BY: AP	ORIGINATION DATE: 05/07/2023	SCALE : PROPORTIONAL - DO NOT SCALE REF SCALE 2:1 WHEN PRINTED ON A3		

PROPRIETARY RIGHTS ARE INCLUDED IN THE INFORMATION DISCLOSED HEREIN. NEITHER THIS DOCUMENT NOR ANY INFORMATION DISCLOSED SHALL BE REPRODUCED, USED, TRANSFERRED TO OTHER DOCUMENTS, OR DISCLOSED TO OTHERS FOR ANY PURPOSE INCLUDING MANUFACTURING UNLESS SPECIFICALLY AUTHORIZED IN WRITING. REMOVE ALL SHARP EDGES AND BURRS. PART FINISHING AND MARKING TO CESF001

