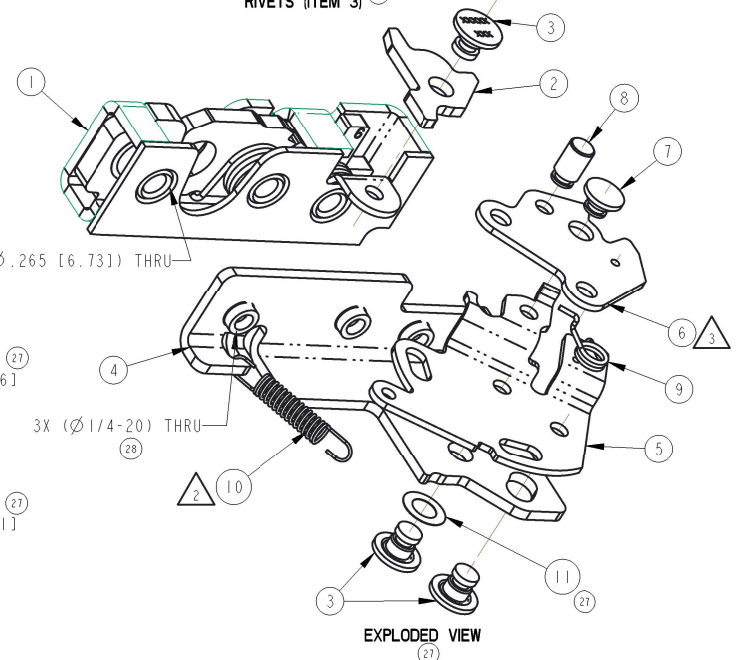
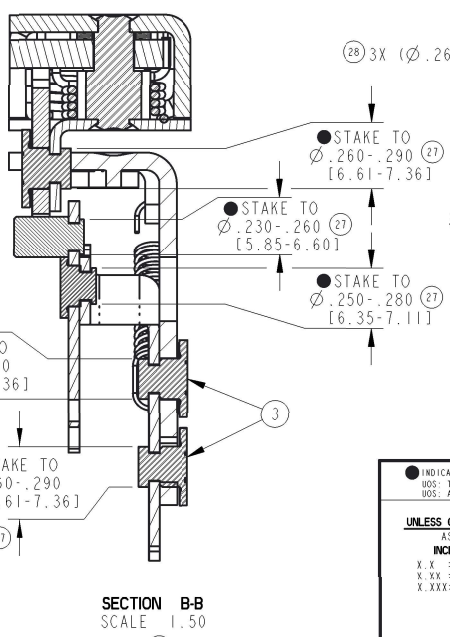
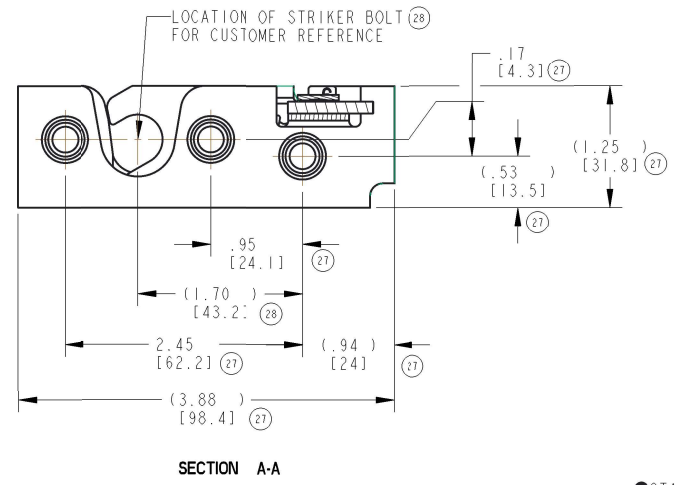
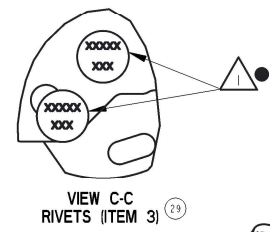
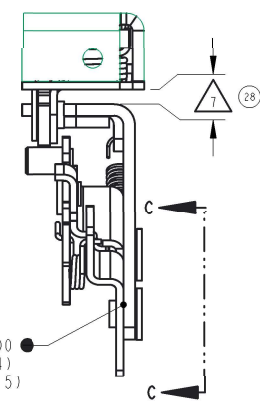
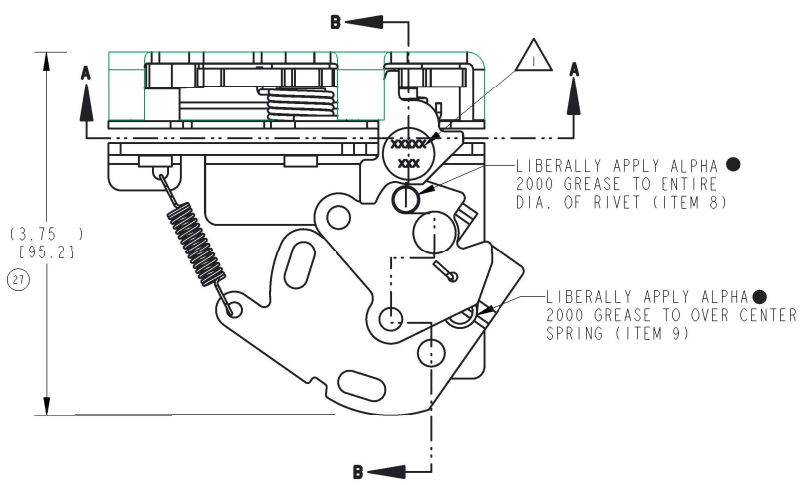


PART NUMBER	ITEM 1 BASE LATCH (QTY)	ITEM 2 LEVER (QTY)	ITEM 3 RIVET (QTY)	ITEM 4 PLATE (QTY)	ITEM 5 LEVER (QTY)	ITEM 6 LOCK ARM (QTY)	ITEM 7 RIVET (QTY)	ITEM 8 RIVET (QTY)	ITEM 9 SPRING (QTY)	ITEM 10 SPRING (QTY)	ITEM 11 WASHER (QTY)	PART MARKING
11342-16	(28) (27) 0500200-63 (1)	(29) 11819-42 (1)	80635-16 (3)	81630-16 (1)	11322-16 (1)	11818-16 (1)	81133-16 (1)	81013-42 (1)	80710-57 (1)	(26) 81016-57 (1)	(27) 80950-15 (1)	11342

REVISION	ECN	ECN BY	DESCRIPTION
26	20769	MAD 3/6/06	ADDED 80950-15; 260-.290 WAS .305-.335; UPDATE TO NEW FORMAT
27	38761	AGJ 11/10/14	UPDATED: SIZE (C WAS B), DESC. ADDED: SECTION B-B, ISO VIEW, CR/PR DIMS, PART MARKG COLUMN, NOTES 4-6. 80950-15 QTY IS (1) WAS (2).
28	39355	GDE 2016-03-25	ADDED: NOTES (7,8) (SPACER), (1.70), DUAL DIMS, 3X 1/4-20, STK BLT LOC MOVED: 3X (Ø.265) TO ISO VIEW. UPDATED: NOTE 6.
29	39544	TPL 2016-10-07	IN BOM: ITEM 1 (BASE LATCH) WAS 0500200-01; ADDED VIEW TO SHOW MARKING OF ADD'L RIVETS.



- NOTES: UNLESS OTHERWISE SPECIFIED;
- 1 IDENTIFY ASSEMBLY WITH PART NUMBER AND DATE CODE APPROXIMATELY AS SHOWN, OR IN OTHER APPROVED LOCATIONS AS OUTLINED IN ES-121.
  - 2 ORIENTATION OF THE RIVET CONTAINING PART MARKING NOT IMPORTANT.
  - 3 ORIENTATION OF SPRING (ITEM 10) NOT CRITICAL.
  - 4 AFTER STAKING, LOCK ARM (ITEM 6) SHOULD ROTATE FREELY WITH NO NOTICEABLE RESISTANCE.
  - 5 OPPOSITE HAND ITEM IS 11344-16.
  - 6 USE WITH TRIMARK'S Ø.500 STRIKER BOLT.
  - 7 TIGHTEN GRADE 5 OR BETTER MOUNTING FASTENERS TO THE FASTENER MANUFACTURER'S RECOMMENDED TORQUE VALUE; HOWEVER, DO NOT EXCEED 120 IN-LB [13.6 Nm].
  - 8 FOR PROPER FUNCTION OF ASSEMBLY, A SPACER 0.099-0.111 IN [2.51-2.82 MM] THICK IS REQUIRED BETWEEN THE LATCH AND LOGIC MECHANISM.
  - 9 8. DIMENSIONS IN [ ] ARE MILLIMETERS, FOR REFERENCE ONLY.

INDICATES REQUIRED ASSEMBLY INFORMATION: UOS: THE "00" VERSION SHALL BE THE UNWISHED VERSION OF PART SHOWN. UOS: ALL DIMENSIONS APPLY BEFORE COATING. (ASME Y14.5M, sec. 2.4.11)		<b>TriMark</b> 500 Bailey Avenue P. O. Box 350 New Hampton, Iowa 50659 U.S.A. Tel: 641-394-3188 Fax: 641-394-2392	
<b>TOLERANCES UNLESS OTHERWISE SPECIFIED (UOS)</b> ASME Y14.5M-1994 INCH MILLIMETER X .X ±.1 X ±.3 X .XX ±.03 X .X ±.8 X .XXX ±.010 X .XX ±.25		DRAWN BY: JGP 1990-07-23 CHECKED BY: SAB 1990-07-27	PROJECT: - PRODUCT CODE: E23 (050-0250)
<b>ANGLES</b> X ° ±.3° X ° ±1.0° X ° ±.50°		CUSTOMER: - CUSTOMER PART NUMBER: -	DESCRIPTION: 050-0250, RH, 2POSN, .265, LTCH/LTNK (28) (27)
REF: T/M OF 4.20-2 FOR SUP. QUALITY REQ. REF: T/M OF 4.20-3 FOR INT. QUALITY REQ.		PART WEIGHT: (0.97 LB) SURFACE AREA: -	SIZE: C SCALE: 1.0 PART NUMBER: 11342