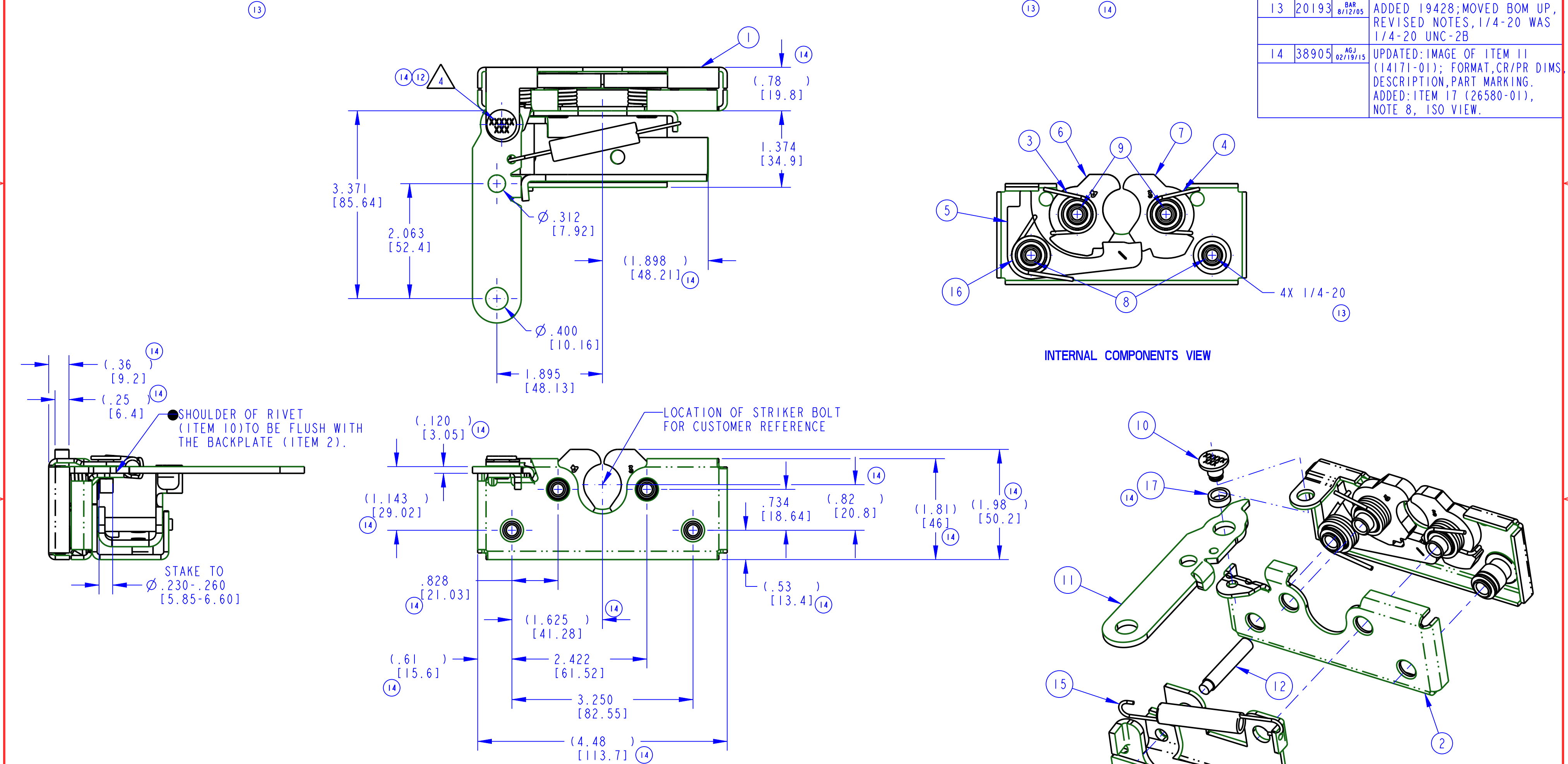


PART NUMBER	ITEM 1 PLATE (QTY)	ITEM 2 PLATE (QTY)	ITEM 3 SPRING (QTY)	ITEM 4 SPRING (QTY)	ITEM 5 CATCH (QTY)	ITEM 6 ROTOR (QTY)	ITEM 7 ROTOR (QTY)	ITEM 8 AXLE (QTY)	ITEM 9 AXLE (QTY)	ITEM 10 RIVET (QTY)	ITEM 11 LEVER (QTY)	ITEM 12 PIN (QTY)	ITEM 13 BRACKET (QTY)	ITEM 14 BELLCRANK (QTY)	ITEM 15 SPRING (QTY)	ITEM 16 SPRING (QTY)	ITEM 17 BUSHING (QTY)	14 PART MARKING
11473-16	12115-16 (1)	11388-16 (1)	80853-00 (1)	80854-00 (1)	80631-26 (1)	81051-26 (1)	81052-26 (1)	81053-16 (2)	81055-16 (2)	81656-16 (1)	14171-01 (1)	11220-16 (1)	80923-16 (1)	80922-16 (1)	80926-57 (1)	19427-01 (1)	26580-01 (1)	11473

REVISION	ECN	ECN BY	DESCRIPTION
10	8791	JMK 7/27/95	UPDATED DISPLAY OF 80922-16
11	8815	DFT 8/28/95	14171-01 WAS 80919-16
12	14219	TJM 02/14/00	REVISED NOTE 9, PROD CODE UPDATED DISPLAY
13	20193	BAR 8/12/05	ADDED 19428; MOVED BOM UP, REVISED NOTES, 1/4-20 WAS 1/4-20 UNC-2B
14	38905	AGJ 02/19/15	UPDATED: IMAGE OF ITEM 11 (14171-01); FORMAT, CR/PR DIMS DESCRIPTION, PART MARKING. ADDED: ITEM 17 (26580-01), NOTE 8, ISO VIEW.



LEVER (ITEM 11), PIN (ITEM 12), BRACKET (ITEM 13), BELLCRANK (ITEM 14), AND SPRING (ITEM 15) NOT SHOWN FOR CLARITY

NOTES: UNLESS OTHERWISE SPECIFIED;

- ASSEMBLY COMPLIES WITH STRENGTH REQUIREMENTS OF SAE J839.
- USE WITH TRI/MARK'S $\phi .675$ [17.15] LATCH BOLT.
- STAKE ITEM 8 TO HOLD LATCH ASSEMBLY TOGETHER. ASSEMBLE ITEM 13 TO ITEM 14 WITH ITEM 12 THEN STAKE TO ITEM 9.
- IDENTIFY ASSEMBLIES WITH PART NUMBER AND DATE CODE, APPROXIMATELY AS SHOWN OR IN OTHER APPROVED LOCATIONS AS OUTLINED IN ES-121. ORIENTATION OF RIVET CONTAINING PART NUMBER AND DATE CODE NOT IMPORTANT.
- DIMENSIONS IN [] ARE IN MILLIMETERS FOR REFERENCE ONLY.
- TIGHTEN GRADE 5 OR BETTER MOUNTING FASTENERS TO THE FASTENER MANUFACTURER'S RECOMMENDED TORQUE VALUE; HOWEVER, DO NOT EXCEED 120 IN-LB [13.6 Nm]. MOUNTING HOLE SIZE NOT TO EXCEED $\phi .312$ [7.92].
- AXLES TO WITHSTAND A MINIMUM OF 120 IN-LB [13.6 Nm] OF TORQUE.
- OPPOSITE HAND ITEM IS 11472-16.

<p>INDICATES REQUIRED ASSEMBLY INFORMATION. UOS: THE -00 VERSION SHALL BE THE UNFINISHED VERSION OF PART SHOWN. UOS: ALL DIMENSIONS APPLY BEFORE COATING. (ASME Y14.5M, sec. 2.4.1)</p>		<p>TriMark 500 Bailey Avenue P. O. Box 350 New Hampton, Iowa 50659 U.S.A. Tel: 641-394-3188 Fax: 641-394-2392</p>	
<p>TOLERANCES UNLESS OTHERWISE SPECIFIED (UOS) ASME Y14.5M-1994</p>		<p>DRAWN BY JPR 8/12/87</p>	<p>PRODUCT CODE E13 (050-0170)</p>
<p>DO NOT SCALE DRAWING</p>		<p>CHECKED BY BAB 8/12/87</p>	<p>CUSTOMER L86057-35</p>
<p>REF. T/M OP 4.20-2 FOR SUP. QUALITY REQ. REF. T/M OP 4.20-3 FOR INT. QUALITY REQ.</p>		<p>PART WEIGHT (1.30 LB)</p>	<p>PART NUMBER 11473</p>

This drawing and the information contained herein is the property of TriMark Corporation and shall not be used for any purpose without our written consent.

DESCRIPTION
2POSN, RH, 1/20, STRDLMNT, BELCRK