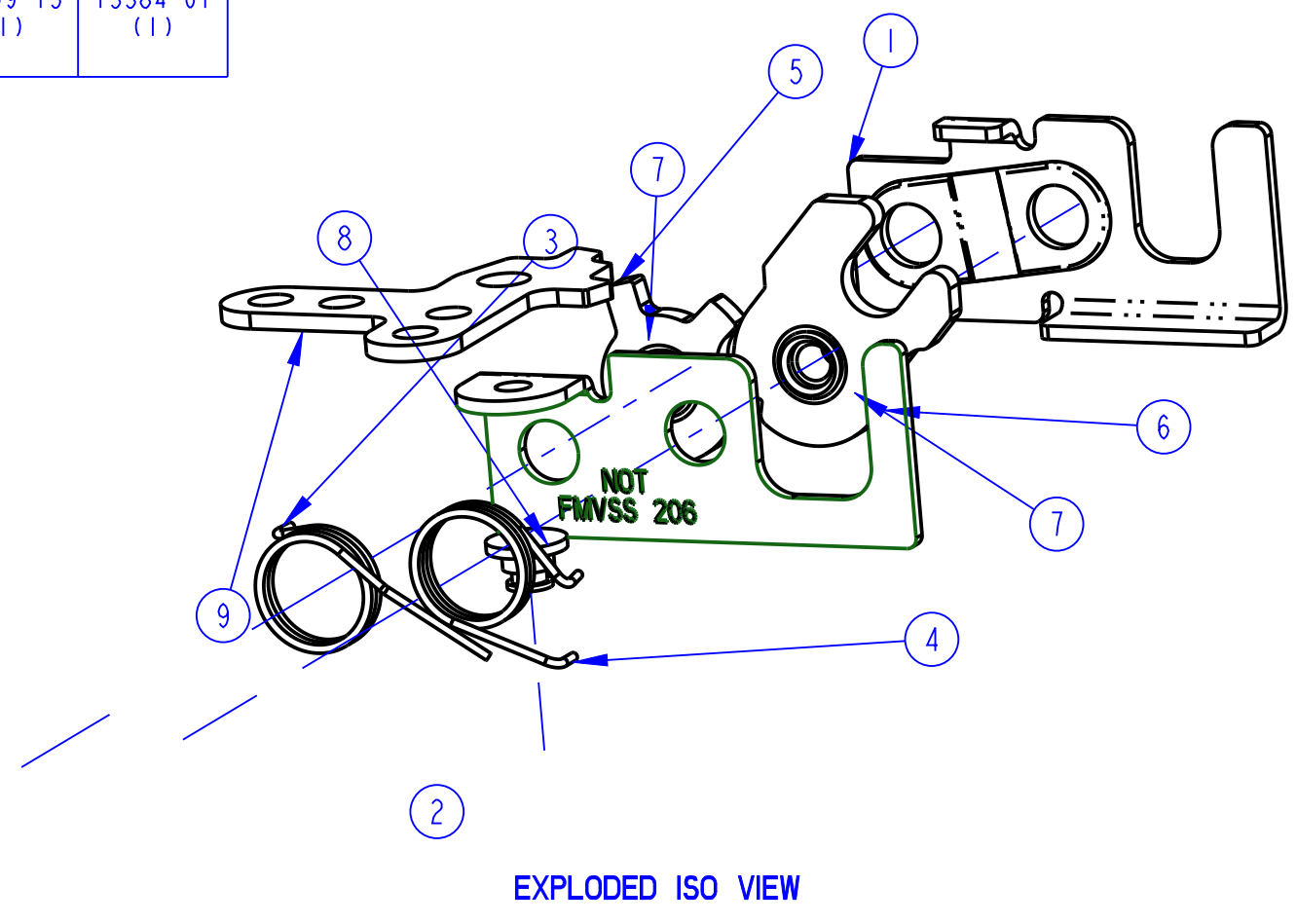
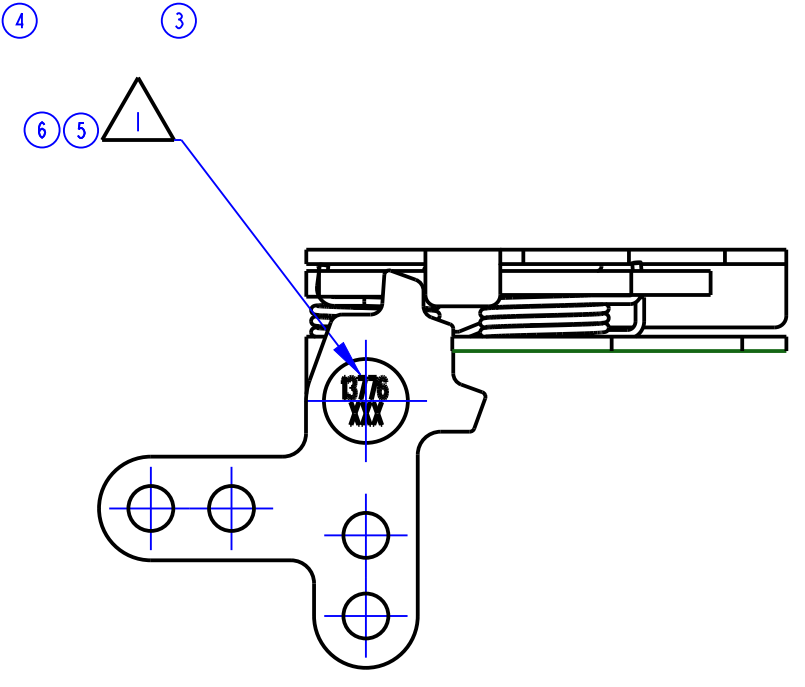
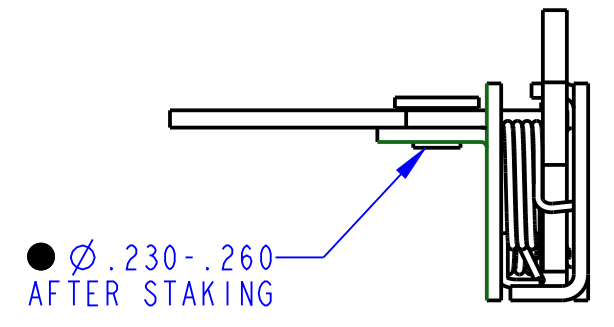
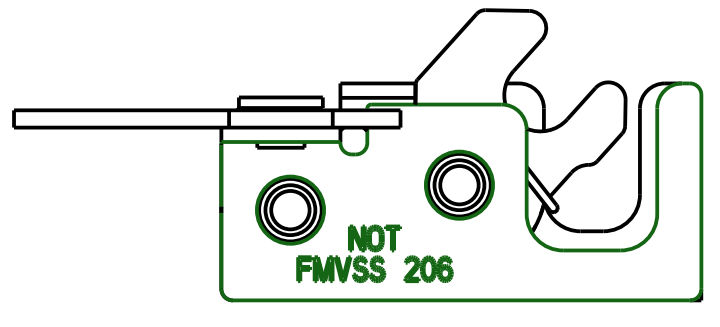


PART NUMBER	ITEM 1 PLATE (QTY)	ITEM 2 PLATE (QTY)	ITEM 3 SPRING (QTY)	ITEM 4 SPRING (QTY)	ITEM 5 CATCH (QTY)	ITEM 6 ROTOR (QTY)	ITEM 7 AXLE (QTY)	ITEM 8 RIVET (QTY)	ITEM 9 LEVER (QTY)
13776-01	15669-01 (1)	13777-01 (1)	13779-01 (1)	13778-01 (1)	13376-01 (1)	13378-01 (1)	13377-01 (2)	80609-15 (1)	13384-01 (1)

REVISION	ECO	BY	CHECKED	DESCRIPTION
0	RLSE	JMK 2/8/96	DGI 2/13/96	RELEASED FOR PRODUCTION; ADDED PRODUCT CODE
1	9521	DA 7/26/96	REC 7/26/96	ADDED NOTE 2 AND VIEW OF ROTOR CATCH (ITEM 5)
2	9904	CML 4/2/97	REC 4/2/97	ADDED -02 FINISH;REVISED NOTE 2
3	10077	DA 8/7/97	JMK 8/8/97	REVISED DISPLAY OF 13777-01
4	10459	DA 5/12/98	CML 5/14/98	15669-01 WAS 13781-01
5	14219	TJN 02/17/00	JRS 02/17/00	REVISED NOTE 1, PROD CODE UPDATED DISPLAY
6	18330	MLH 11/21/00	BJB 11/21/00	13776 WAS 13376
7	18723	MLH 2/22/01	BJB 2/22/01	ADDED NOTE 3
8	19397	TEB 8/14/02	MLH 8/14/02	REMOVED NOTE 2;REMOVED ROTOR CATCH VIEW
9	19893	MLH 4/20/04	GDE 4/20/04	DELETED VERSION -02; REVISED BOM



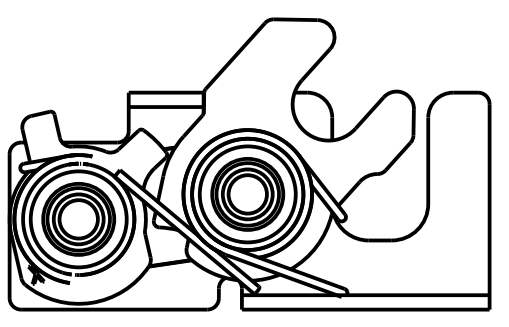
EXPLODED ISO VIEW



2X 1/4-20 UNC-2B

● \varnothing .230-.260
AFTER STAKING

- NOTES:
- ⑤ ● IDENTIFY ASSEMBLY WITH PART NUMBER AND DATE CODE APPROXIMATELY AS SHOWN, OR IN OTHER APPROVED LOCATIONS AS OUTLINED IN ES-121. ORIENTATION OF THE RIVET CONTAINING PART NUMBER AND DATE CODE NOT IMPORTANT.
 - ⑦ ● 2. AXLES TO WITHSTAND A MINIMUM OF 100 IN-LBS OF TORQUE.



BACK PLATE (ITEM 2), TRIP LEVER (ITEM 9),
AND RIVET (ITEM 8) NOT SHOWN

● INDICATES REQUIRED ASSEMBLY INFORMATION.

DRAWN BY	JMK	11/27/95	MATERIAL	
CHECKED BY	DGI	11/28/95	HEAT TREAT	
DESIGN ENG.	SJG	2/13/96	FINISH	
PROD. MNGR.			PROJECT	94010
TOLERANCES UNLESS OTHERWISE SPECIFIED			CUSTOMER	
ASME Y14.5M-1994			CUSTOMER PART NUMBER	
INCH MILLIMETER			SIZE	C
X.X	±.1	X	PART WEIGHT	(.2 LB)
X.XX	±.03	X.X	SURFACE AREA	
X.XXX	±.010	X.XX	PRODUCT CODE	⑤⑥ E31 (050-0500)
ANGLES			SCALE	FULL
X°	±3°		REVISION	9
X.X°	±1.0°		TYPE	
X.XX°	±.50°		PART NUMBER	13776-XX
DO NOT SCALE DRAWING			DESCRIPTION	
			ASSY, SGLRTR, MINI, LH	
			REF. T/M OP 4.20-2 FOR SUP. QUALITY REQ. - REF. T/M OP 4.20-3 FOR INT. QUALITY REQ.	



This drawing and the information contained herein is the property of TriMark Corporation and shall not be used for any purpose without our written consent.