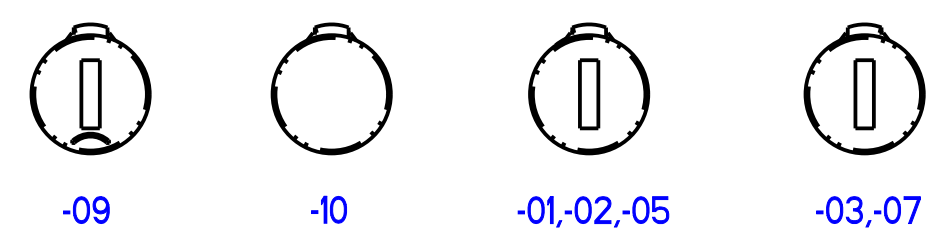
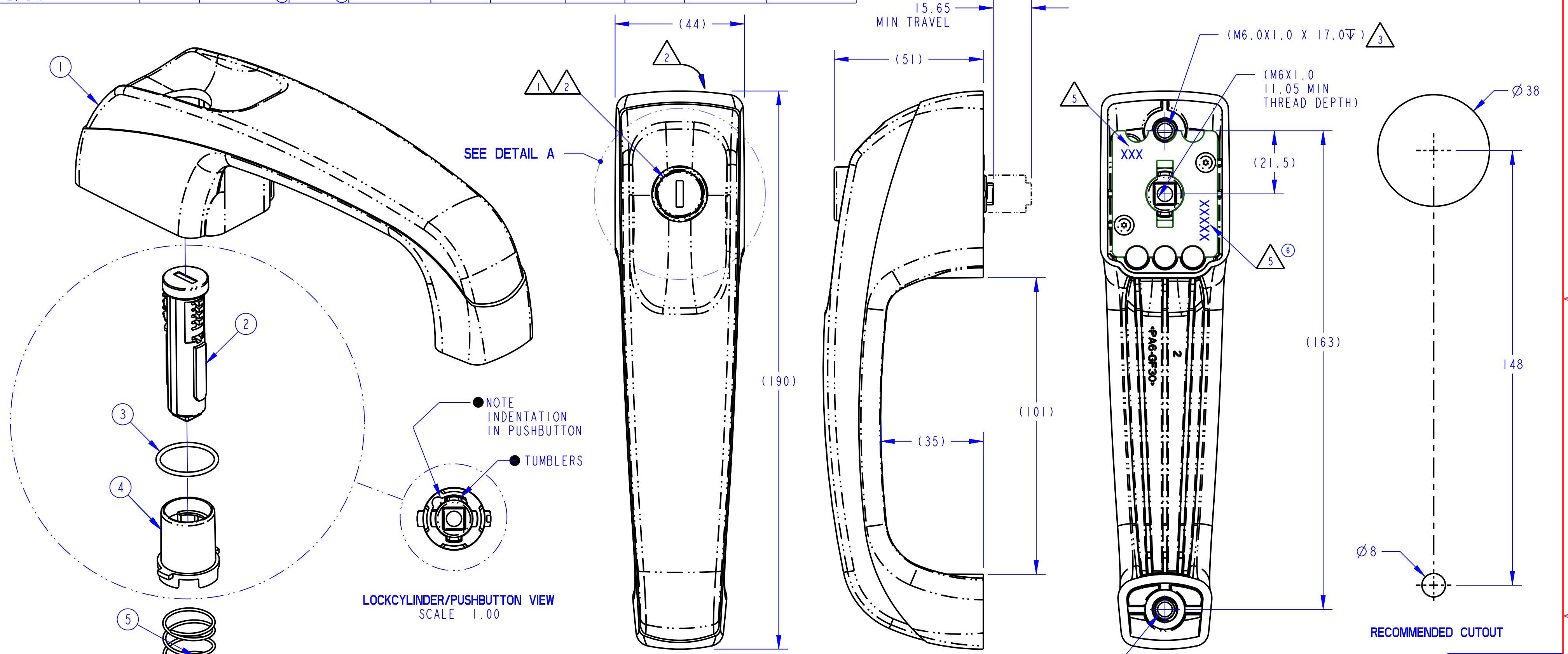


PART NUMBER DESCRIPTION	ITEM 1 HANDLE (QTY)	ITEM 2 LOCK CYLINDER (QTY)	ITEM 3 O-RING (QTY)	ITEM 4 PUSHBUTTON (QTY)	ITEM 5 SPRING (QTY)	ITEM 6 LOCK PLATE (QTY)	ITEM 7 SCREW (QTY)	INSERTION SYMBOL	KEYS SUPPLIED Y/N (QTY)	PART MARKING
19590-01 ASSY, HNDL, 163MM, 2 HOLE, PB, TA183, 2 KEYS	19464-01 (1)	16287-17 (1) (4) (6)	80773 (1)	24887-01 (1)	80768-57 (1)	19465-01 (1)	81789-15 (2)	NO	YES (2)	19590
19590-02 ASSY, HNDL, 163MM, 2 HOLE, PB, 14603, NO KEYS		29505-02 (1) (7)							NO	
19590-03 ASSY, HDL, 163MM, 2 HOLE, PB, D250, NO KEYS		29505-03 (1) (7)							YES	
19590-05 ASSY, HDL, 163MM, 2 HOLE, PB, TA001-TA010, 2 KEYS		29505-04 (1) (6) (7)							NO	
19590-07 ASSY, HDL, 163MM, 2 HOLE, PB, CH751, 2 KEYS		16287-18 (1)							YES	
19590-09 ASSY, HDL, 163MM, 2 HOLE, PB, CAT 5P8500, NO KEYS		16287-11 (1)							NO	
19590-10 ASSY, HDL, 163MM, 2 HOLE, PB, NLKG		29505-05 (1) (7)							NO	
									N/A	



DETAIL A (1)  
LOCKCYLINDER (ITEM 2) VERSION SCALP CONFIGURATION

REVISION	ECN	ECN BY	DESCRIPTION
6	28116	RLO 4-27-10	-01;16287-17 WAS 21426-02, -05;16287-15 WAS 21426-01. ADDED PART MARKING COLUMN. UPDATED DETAIL A, PART MARK, PART NUMBER.
7	38036	RLO 11-6-12	ITEM 2 (LOCKCYLINDER); 29505-02 WAS 16287-12, 29505-03 WAS 16287-13, 29505-04 WAS 16287-15, 29505-05 WAS 16287-16. UPDATED LOCK SCALP VIEWS. ITEM 3;80773 WAS 80773-00 (TO MATCH AS400).



- NOTES: UNLESS OTHERWISE SPECIFIED;
- (1) ASSEMBLY SHOWN AND SHIPPED IN UNLOCKED POSITION. SEE TABLE OR DETAIL A FOR INSERTION SYMBOL.
  - (2) LOCKCYLINDER (ITEM 2) ROTATES 90° IN A CLOCKWISE DIRECTION TO LOCK PUSHBUTTON ASSEMBLY.
  - (3) RECOMMENDED MOUNTING FASTENER TORQUE TO BE 5.6-6.7 N-m.
  - 4. ALL DIMENSIONS, EXCEPT WHERE NOTED, ARE FOR CUSTOMER AND/OR ISIR PURPOSES.
  - (5) STAMP LOCK PLATE (ITEM 6) WITH PART NUMBER AND DATE CODE PER ES-121. LOCATE APPROXIMATELY AS SHOWN.

<p>(5) INDICATES REQUIRED ASSEMBLY INFORMATION. UOS: THE -00 VERSION SHALL BE THE UNFINISHED VERSION OF PART SHOWN. UOS: ALL DIMENSIONS APPLY BEFORE COATING. (ASME Y14.5M, sec. 2.4.1)</p> <p>TOLERANCES UNLESS OTHERWISE SPECIFIED (UOS) ASME Y14.5M-1994</p> <p>INCH MILLIMETER</p> <p>X.X ±.1 X ±.3 X.XX ±.03 X.X ±.8 X.XXX ±.010 X.XX ±.25</p> <p>ANGLES X° = ±3° X.X° = ±1.0° X.XX° = ±.50°</p> <p>DO NOT SCALE DRAWING</p> <p>REF. T/M OP 4.20-2 FOR SUP. QUALITY REQ. REF. T/M OP 4.20-3 FOR INT. QUALITY REQ.</p>		<p>DRAWN BY MJP 03/18/03</p> <p>CHECKED BY CJH 03/18/03</p> <p>PROJECT 02042 PRODUCT CODE D07 (040-0600)</p> <p>CUSTOMER</p> <p>CUSTOMER PART NUMBER</p> <p>PART WEIGHT (218.3 g) SURFACE AREA</p>	<p><b>TriMark</b></p> <p>500 Bailey Avenue P. O. Box 350 New Hampton, Iowa 50659 U.S.A. Tel: 641-394-3188 Fax: 641-394-2392</p> <p>This drawing and the information contained herein is the property of TriMark Corporation and shall not be used for any purpose without our written consent.</p>
<p>DESCRIPTION SEE TABLE</p> <p>SIZE C SCALE 1.0 PART NUMBER 19590 (6)</p>			

METRIC