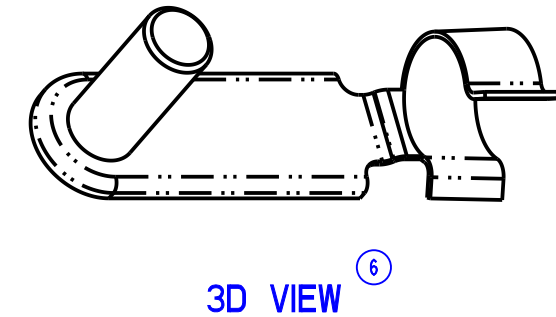
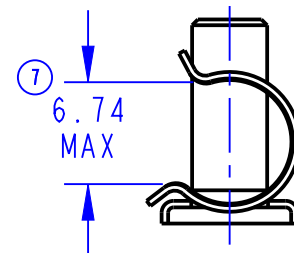
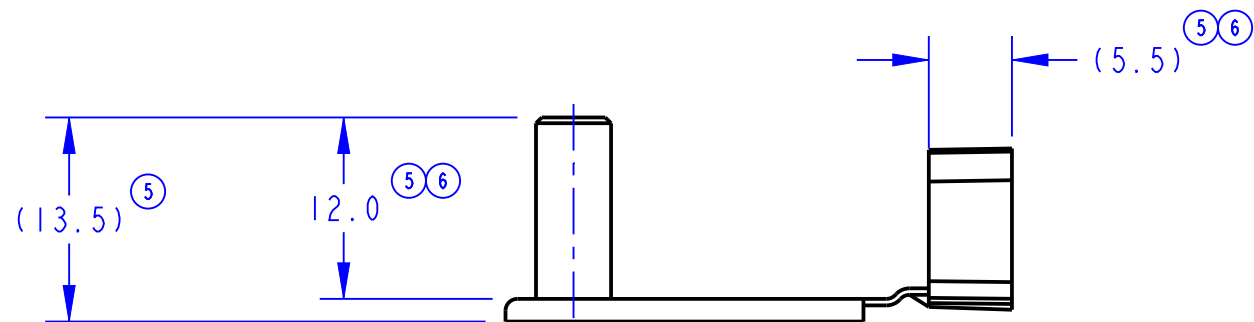
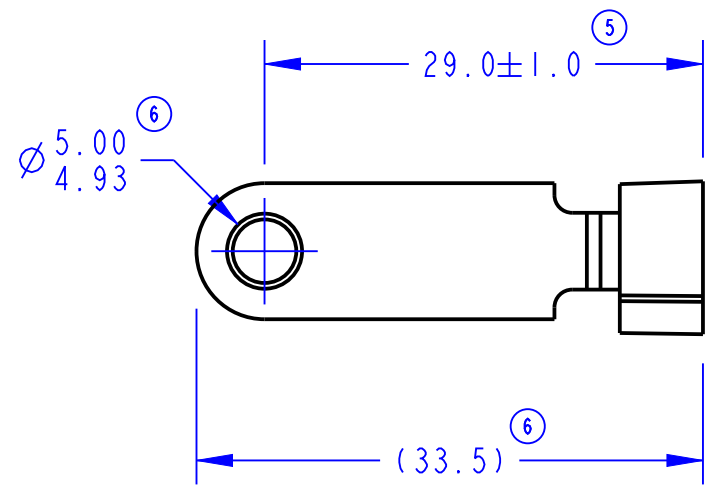


PART NUMBER	MATERIAL	FINISH
80989-16	CARBON STEEL (6)	COAT CLEAR PER ES-104E (5)(6)

REVISION	ECN	ECN BY	DESCRIPTION
5	06425	GDE 07/12/07	(.532) WAS (.560), .472 WAS .480, (.197) WAS .217, 1.142±.040 WAS (1.142). CONVERTED DRAWING TO METRIC. UPDATED: FINISH, FORMAT.
6	29085	RLO 5-28-10	UPDATED; DRAWING TO MATCH SUPPLIER PART, PART NUMBER, NOTES, MATERIAL, FINISH, PART NUMBER DESCRIPTION, SURFACE AREA. NOTE 1; ESML5F12 WAS ESML5F49. ADDED 3D VIEW.
7	39079	JSM 8/27/15	REVISED NOTE 3, SURFACE AREA, ADDED 6.74 MAX



**METRIC**

- NOTES: UNLESS OTHERWISE SPECIFIED;
- (5)(6) 1. SUPPLIER PART: ESML5F12.
  - (6) 2. MANUFACTURER PART NUMBER: PM5X20 1A.
  - (6)(7) 3. RECOMMENDED SHAFT DIAMETER: 9±0.3 MM.

<p>● INDICATES REQUIRED ASSEMBLY INFORMATION.          UOS: THE -00 VERSION SHALL BE THE UNFINISHED VERSION OF PART SHOWN.          UOS: ALL DIMENSIONS APPLY BEFORE COATING. (ASME Y14.5M, sec. 2.4.1)</p>		<p><b>TriMark</b>          500 Bailey Avenue          P. O. Box 350          New Hampton, Iowa 50659 U.S.A.          Tel: 641-394-3188          Fax: 641-394-2392</p>															
<p><b>TOLERANCES UNLESS OTHERWISE SPECIFIED (UOS)</b>          ASME Y14.5M-1994</p> <table border="0"> <tr> <td>INCH</td> <td>MILLIMETER</td> </tr> <tr> <td>X.X = ±.1</td> <td>X = ±3</td> </tr> <tr> <td>X.XX = ±.03</td> <td>X.X = ±.8</td> </tr> <tr> <td>X.XXX = ±.010</td> <td>X.XX = ±.25</td> </tr> </table> <p><b>ANGLES</b></p> <table border="0"> <tr> <td>X°</td> <td>±3°</td> </tr> <tr> <td>X.X°</td> <td>±1.0°</td> </tr> <tr> <td>X.XX°</td> <td>±.50°</td> </tr> </table>		INCH	MILLIMETER	X.X = ±.1	X = ±3	X.XX = ±.03	X.X = ±.8	X.XXX = ±.010	X.XX = ±.25	X°	±3°	X.X°	±1.0°	X.XX°	±.50°	<p>DRAWN BY <b>JPR</b> 2/14/86</p> <p>CHECKED BY <b>BAB</b> 4/22/86</p>	<p>PROJECT <b>LX86002-4</b></p> <p>PRODUCT CODE <b>J01 (090-0100)</b> (4)</p>
INCH	MILLIMETER																
X.X = ±.1	X = ±3																
X.XX = ±.03	X.X = ±.8																
X.XXX = ±.010	X.XX = ±.25																
X°	±3°																
X.X°	±1.0°																
X.XX°	±.50°																
<p>DO NOT SCALE DRAWING</p>		<p>CUSTOMER PART NUMBER</p>															
<p>REF. T/M OP 4.20-2 FOR SUP. QUALITY REQ.          REF. T/M OP 4.20-3 FOR INT. QUALITY REQ.</p>		<p>PART WEIGHT (0.003 KG) (4)</p>	<p>SURFACE AREA (1037.67 MM<sup>2</sup>) (6)(7)</p>														
		<p>SIZE <b>B</b></p>	<p>SCALE <b>2.0</b></p>														
		<p>PART NUMBER <b>80989</b> (6)</p>															

This drawing and the information contained herein is the property of TriMark Corporation and shall not be used for any purpose without our written consent.

DESCRIPTION **CLIP, SPRING PIN, 5 MM** (2)(4)(6)